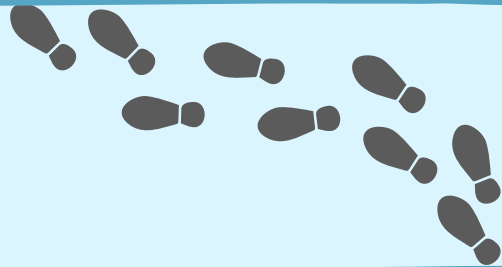


KILLINCARRIG VILLAGE ENHANCEMENT SCHEME

What is proposed?

- The overall aim of this project is to improve the pedestrian and cyclist facilities in Killincarrig Village, by removing telecommunications infrastructure from footpaths and putting them underground, by widening footpaths through the area, and removing on-street parking to facilitate the installation of cycle paths through the area.
- The main junction in the village will also become signalised in order to improve pedestrian, cyclist and vehicular flows through the area whilst also improving safety.



Active Travel in Wicklow

Aims to:

- Promote awareness and uptake of travelling with a purpose, using your own energy by means of walking or cycling.
- Improve transport options for those choosing alternatives to the car.

Contact: ActiveTravel@wicklowcoco.ie



Why are these works required?

- The scheme will provide an improved level of service for pedestrians.
- The scheme will provide improved and safer linkages to public transport, schools and community services.
- The scheme will encourage a modal shift away from motorised forms of transport and will promote and encourage healthy living, wellness and wellness through walking.

Where is the scheme?

The proposed scheme is located on on the R-761 from the roundabout on Church Road through Killincarrig Village.

Commencement Date

Proposed location of works

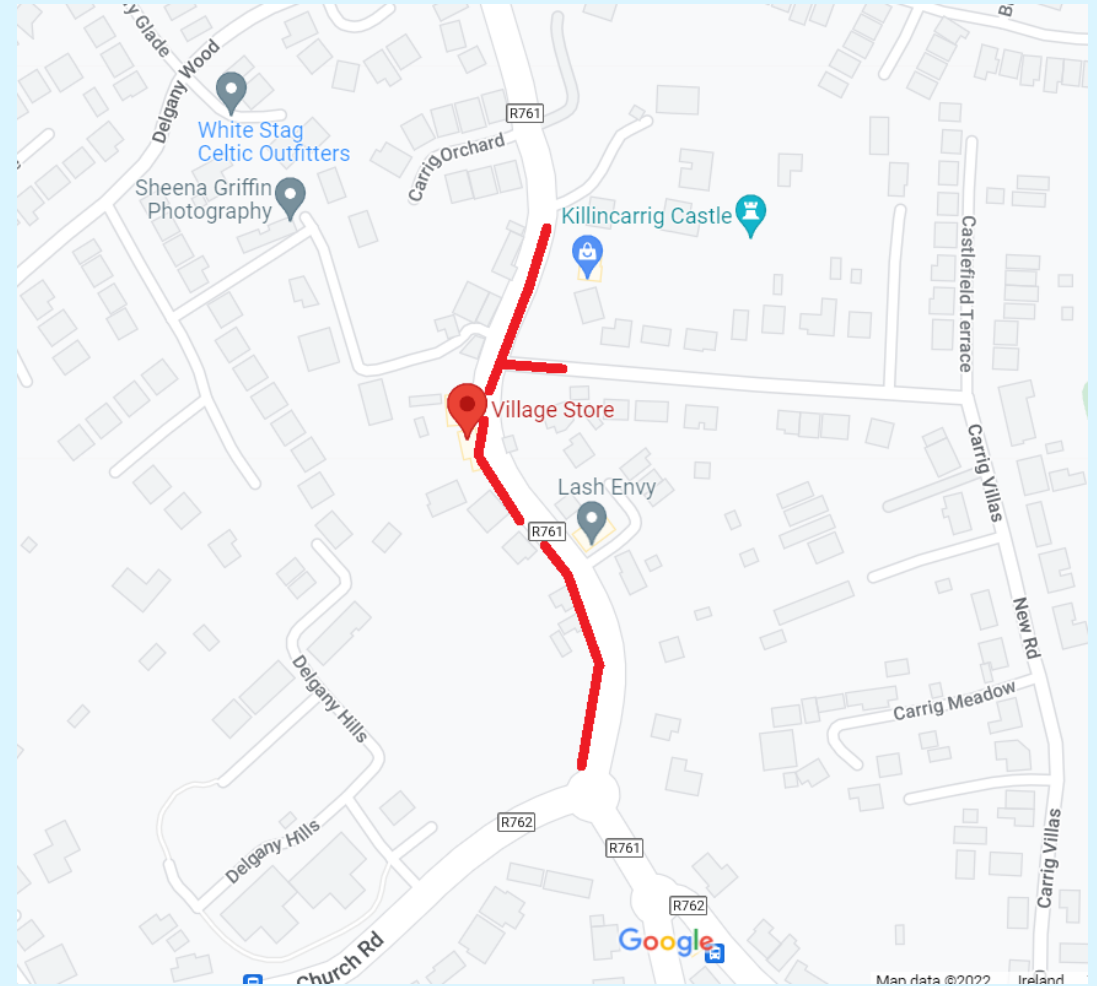


Figure 1 - Project Location Map